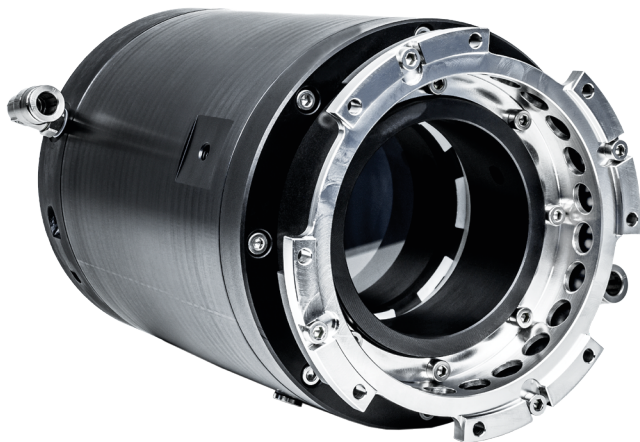


HIGH POWER LASER BEAM DUMP



FEATURES

Suitable for ultrashort pulses (ns, ps, fs) and CW

Suitable for kW power

Custom solutions for large beam sizes

Widely used at ELI Beamlines

BENEFITS

Wide range of usage

Developed for high power lasers

Developed for high energy lasers

The system has been demonstrated to function and provide accurate results

APPLICATIONS

- Ideal solution for laser facilities with high power laser
- Suitable for wide range of lasers, such as CW lasers, pump lasers, and femtosecond beamlines
- Ideal solution for safely terminating beams in shutters or residual pump light of SHG/OPA

HOW DOES IT WORK?

The high power beam dump solution is designed for absorption of high performance pulsed laser beams.

We developed three different cooling concepts: absorption on metal in air, absorption in water and absorption in submerged filters.



SPECIFICATION

Range of power	From 10 W to kW
Sizes	Standard: 68 mm Custom: up to 250 mm
Suitable for various spectra	VIS, NIR, IR
Cooled by air or water	
Light-tight connection to standard vacuum chamber flanges	Ideal for laser in vacuum vessels
Designed to minimize heat transfer from dump to chamber	No thermal load on chamber

ABOUT US

ELI Beamlines is an international user facility that is involved in development and application of multiple highly progressive laser systems including the most powerful systems in the world.

Our in-house development of high power lasers led to some new and unique engineering solutions for many highly demanding applications, where commercial solutions satisfying our stringent requirements did not exist.

CONTACT

Mrs. Miroslava Příbišová
miroslava.pribisova@eli-beams.eu

Mr. Oskar Lažanský
oskar.lazansky@eli-beams.eu

www.eli-beams.eu
 ELI BEAMLINES, Za Radnicí 835,
 Dolní Břežany 252 41, Czech Republic



FZU

Institute of Physics
of the Czech
Academy of Sciences

