

QURe: THE FIRST ULTRAFAST LASER RADIOTHERAPY DEVICE



CORE TECHNOLOGY

Compact laser electron accelerator with modular Seashell design

Ultrafast pulsed radiation source

Up to 100 mGy/pulse at up to 1 kHz pulse rate

Imaging and radiation synchronization at ms-level

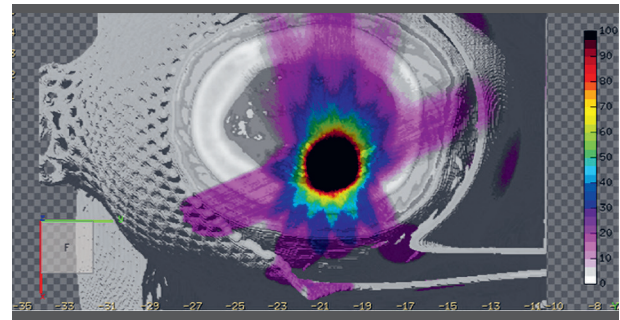
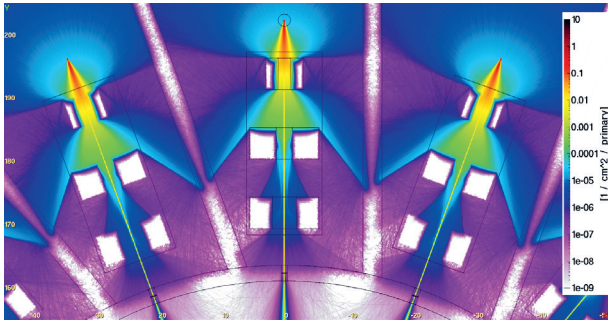
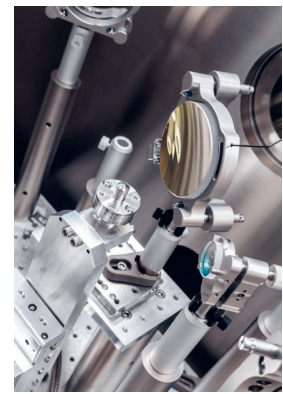
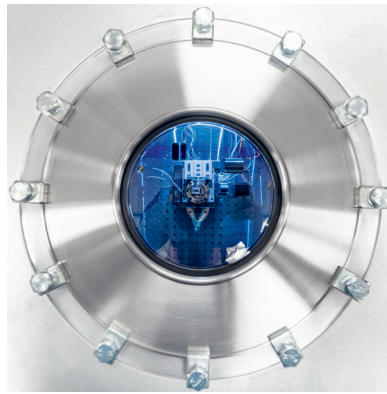
MEDICAL MOTIVATIONS

Increase to 30 M cases/year expected in 2040 worldwide

Faster and higher quality treatments for brain cancer

Real time evaluation and adaption of treatment

Simulations on real patient data confirm good conformity index



SPECIFICATION

Electron Beam	120 MeV
Field Size	up to 15 mm
Dose Rate	up to 1 Gy/s

Dmax	15 cm
Number of beams	7
Treatment Time	< 1 second



INVEST NOW!

Estimated radiotherapy market size 10 B€ in 2025.
Patented technology with disruptive potential in the market.

Looking for investors and strategic partners for the pre-clinical prototype

ABOUT US

ELI Beamlines is an international user facility that is involved in the development and operation of state-of-the-art laser systems, including some of the most powerful lasers in the world.

Our in-house development of high power lasers has led to many new and unique engineering solutions for highly demanding applications where commercial solutions satisfying our stringent requirements did not exist.

CONTACT

Technology Transfer Office
tto@eli-beams.eu

www.eli-beams.eu
 ELI BEAMLINES, Za Radnicí 835,
 Dolní Břežany 252 41, Czech Republic



FZU

Institute of Physics
 of the Czech
 Academy of Sciences