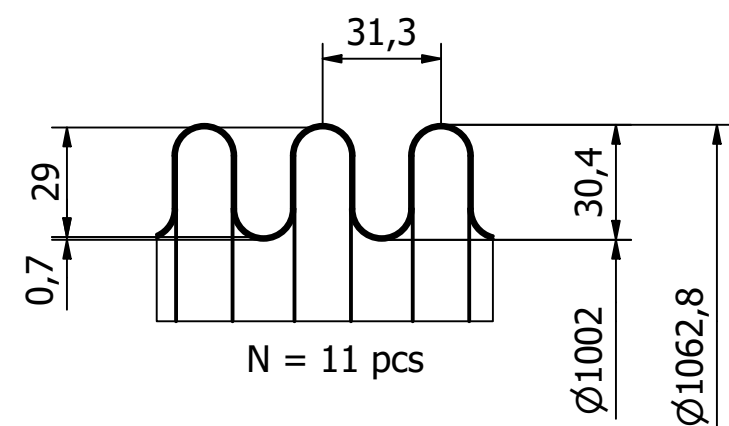
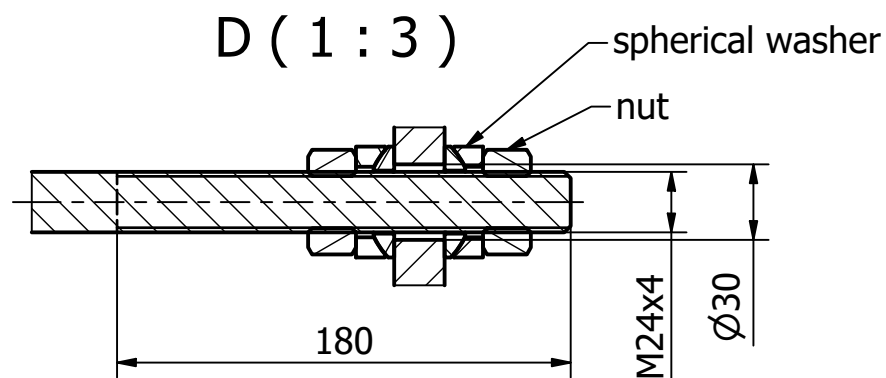


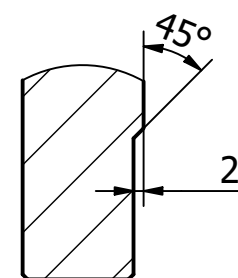
A (1:2)



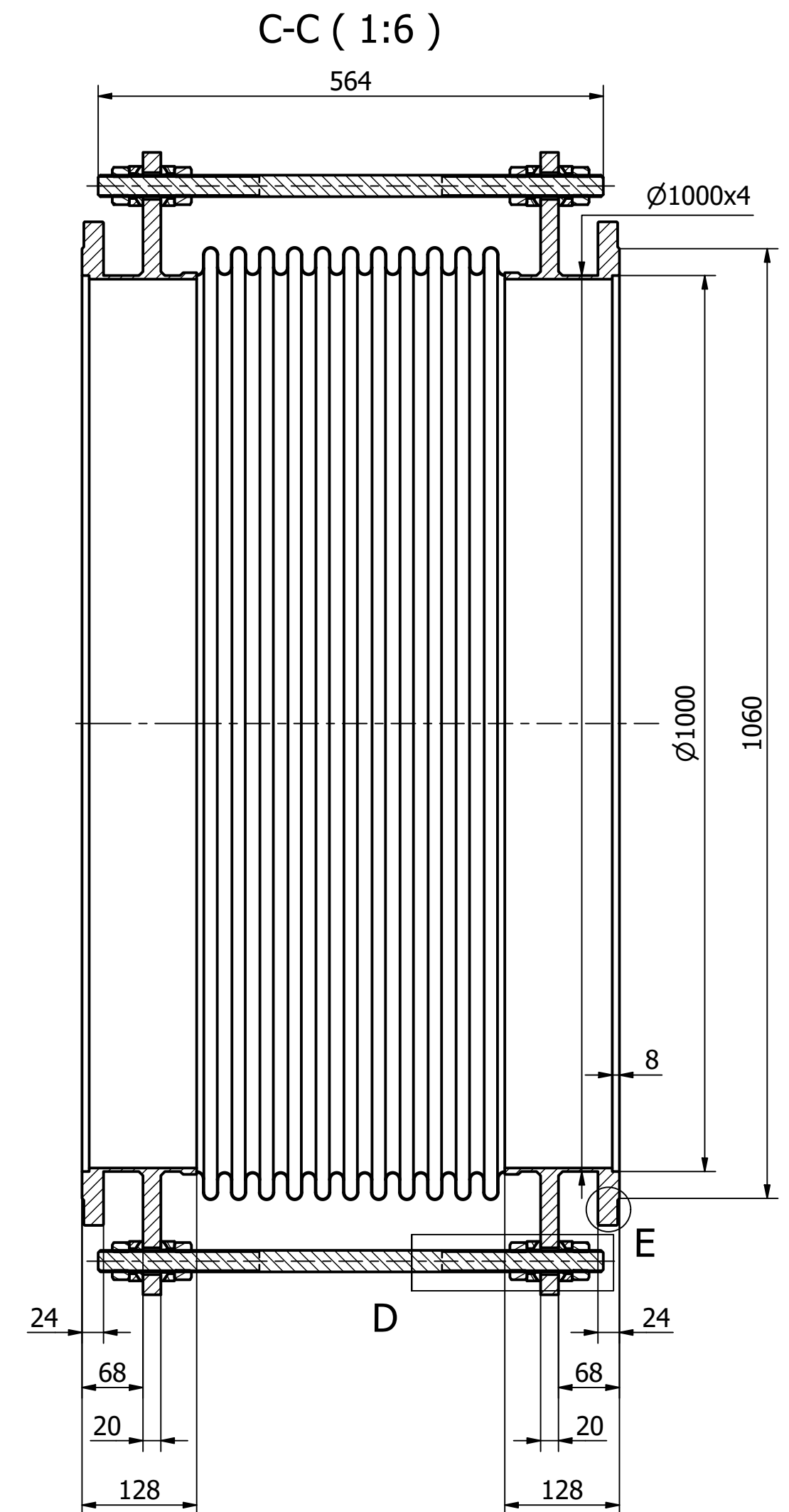
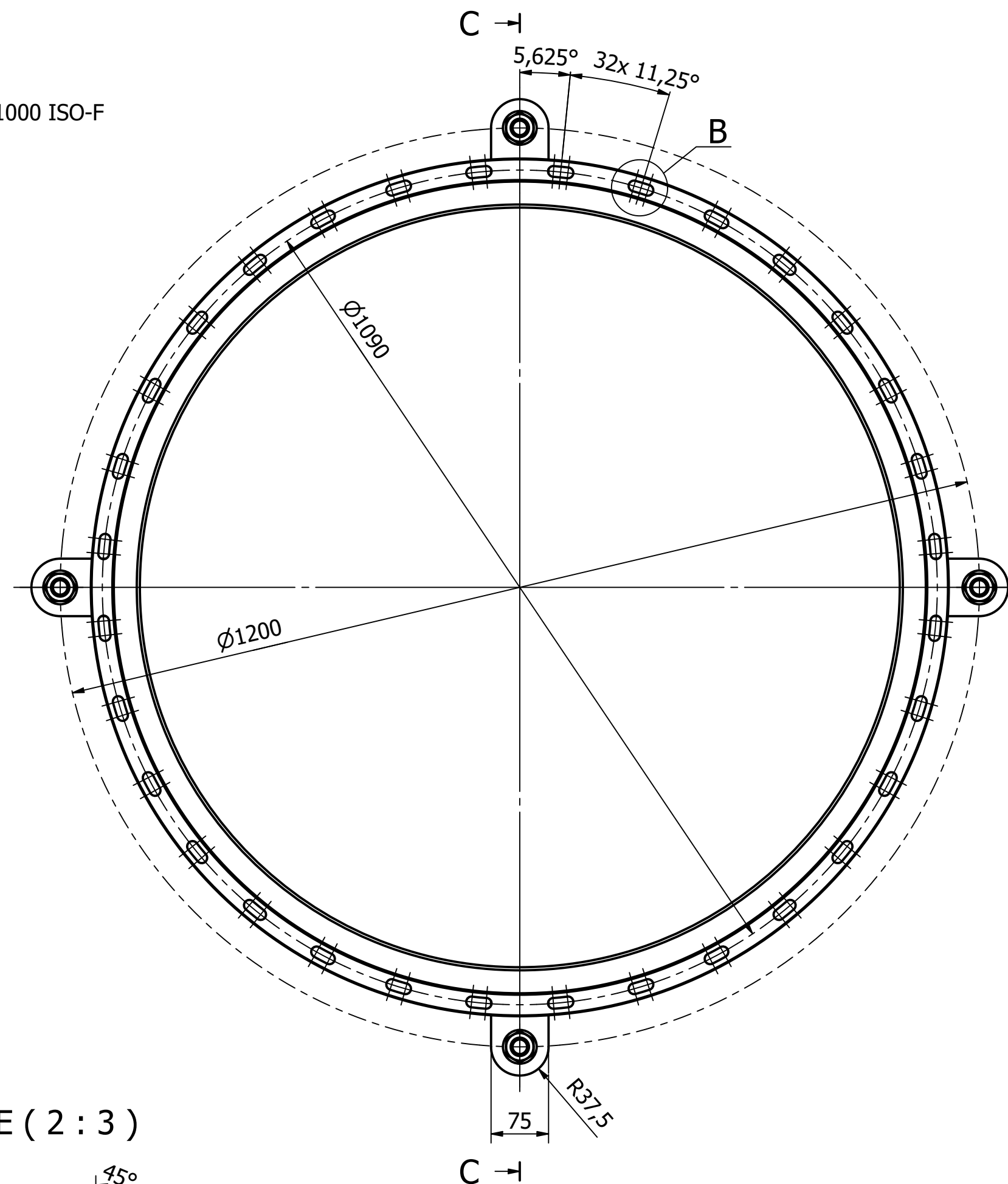
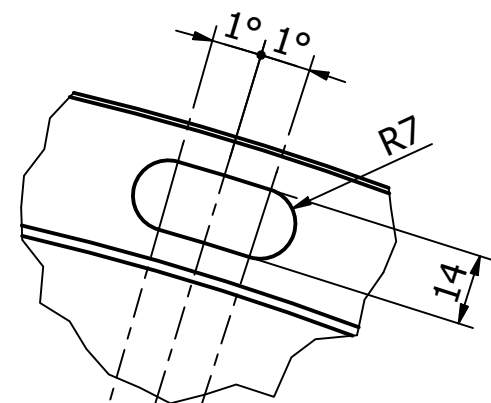
D (1:3)



E (2:3)



B (2:3)



Requirements:

range axial: +/- 25 mm

range lateral: +/- 5 mm

range angular: +/- 0,5 deg

material of bellows: 1.4404 or 1.4541

material of other parts: 1.4404 or 1.4301 (or similar)

surface treatment: passivated

The information contained in this drawing is the sole property of FZU. Any reproduction is prohibited		eli beamlines		Fyzikální ústav Akademie věd ČR, v. v. i.	
Drawn by: Petr Brabenec	Projection:	Scale: 1:6	Sheet size: A2	Dwg. title: Bellows DN 1000	
Chkd by:	Date: 07.02.2022	All dimensions in mm		Dwg. no./TC ID	
Material: Stainless steel	Raw mat.:	Tolerance: ISO2768-mK		Rev. 00	
Weight: Neří k dispozici	Note:	Eli no.:		Sheets 1 of 1	